

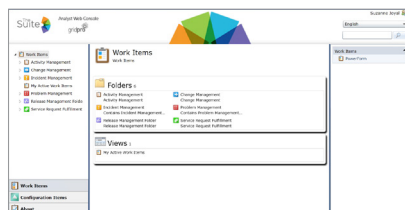


Analyst Web Console

Optimized web access to Service Manager console in a web browser

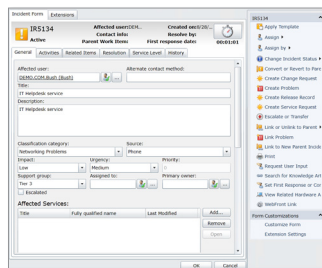
INTERFACE

Users will instantly feel comfortable when entering The Suite Analyst Web Console since it is based on the same principles as the SCSM console.



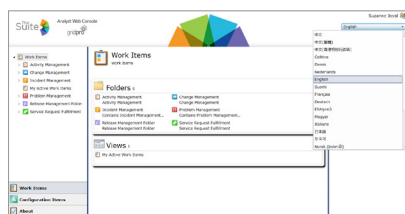
FORMS

The Suite Analyst Web Console brings familiar forms from the SCSM console to your browser. When working in the forms, you have access to the common tasks you have learned to use in the SCSM console.



LANGUAGE SUPPORT

The Suite Analyst Web Console is available in all 23 languages supported by the SCSM console. Language can easily be changed by the end-user or, if required, can be set to a specific language by the administrator.



Benefits

Web Access: Enables SCSM access without the need of installing the console software locally.

Well-known: The familiar interface lets users transition between full and web console without additional training.

Performance: The Suite Analyst Web Console is optimized for the web.

Scalable: Multiple instances can easily be setup for scalability, redundancy and load balancing.

Direct Links: Provides hyperlinks to specific work items or configuration items in email notifications or instant messages.

Form Customization: Enables you to configure form customizations directly in the web browser.

The Suite **Analyst Web Console** is brought to you by:



The Suite

for Microsoft® System Center



The Suite for Microsoft® System Center

The Suite for Microsoft® System Center – Service Manager, a collection of highly acclaimed, partner-built enhancements for Service Manager together in a single, affordable suite. All the capabilities you need. One license. One low price.

The Suite provides you with powerful, extended functionality for total management of Microsoft System Center – Service Manager:

Self Service Portal. A fast, lightweight, highly customizable self-service web portal that allows any user to submit and manage IT requests from a variety of browsers.

Analyst Web Console. Perform common tasks you can ordinarily only accomplish with the Microsoft System Center – Service Manager management console application, using just a web browser.

IT Asset Management. Take control of IT costs, increase efficiency and reduce risk with management of hardware and software assets across the entire life cycle, from request to disposal.

Analytics and Dashboards. Increase operational effectiveness with insight and visibility into important trends and critical performance measures.

Data Management. Greatly speed and simplify the process of getting data into and out of Microsoft System Center – Service Manager, while simultaneously improving the consistency and accuracy of data.

PowerPack. A collection of three powerful add-ons accessible from both the Microsoft System Center – Service Manager console and the web-based analyst console. Together they allow work items to be created before selecting a type, at a glance visibility into all work items assigned to the console user, and rapid work item assignment based on pre-defined relationships.

All of this powerful functionality is provided to you under a single, simple, straightforward license. One low purchase price based on the size of your company gives you an organization-wide, perpetual-use license for all of the products included in **The Suite**.

All the components of **The Suite** are integrated and fully interoperable, and you deal directly with one company for sales and support. You get the best of all worlds: A collection of proven best-of-breed products independently developed by the most innovative and inventive third-party developers of solutions for Microsoft System Center – together in a single suite under one simple license – all at an unbeatable price!

The Suite and **The Essentials** are brought to you by:

expit

gridpro

itnetX

PROVANCE